

FIGURE 2A

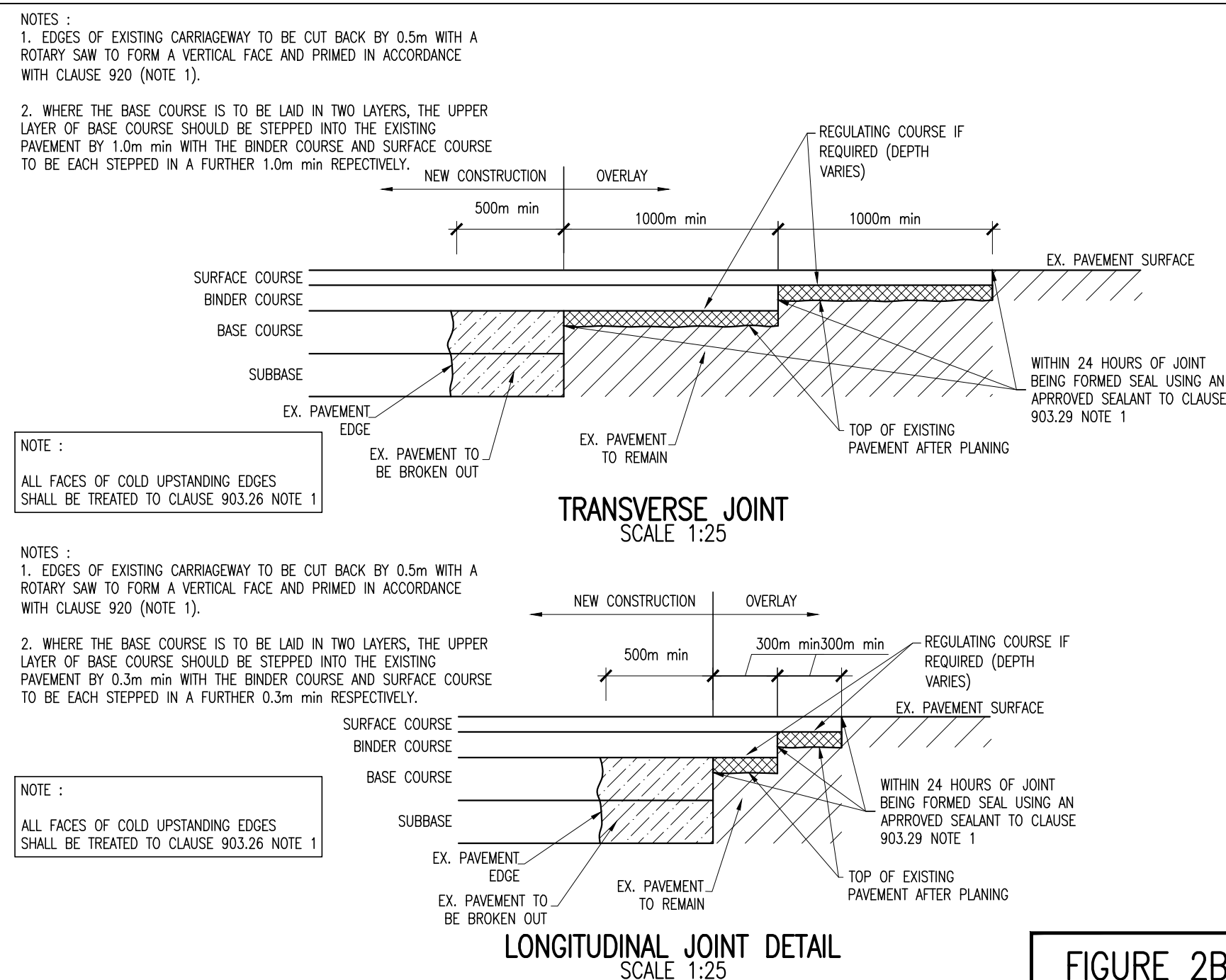


FIGURE 2B

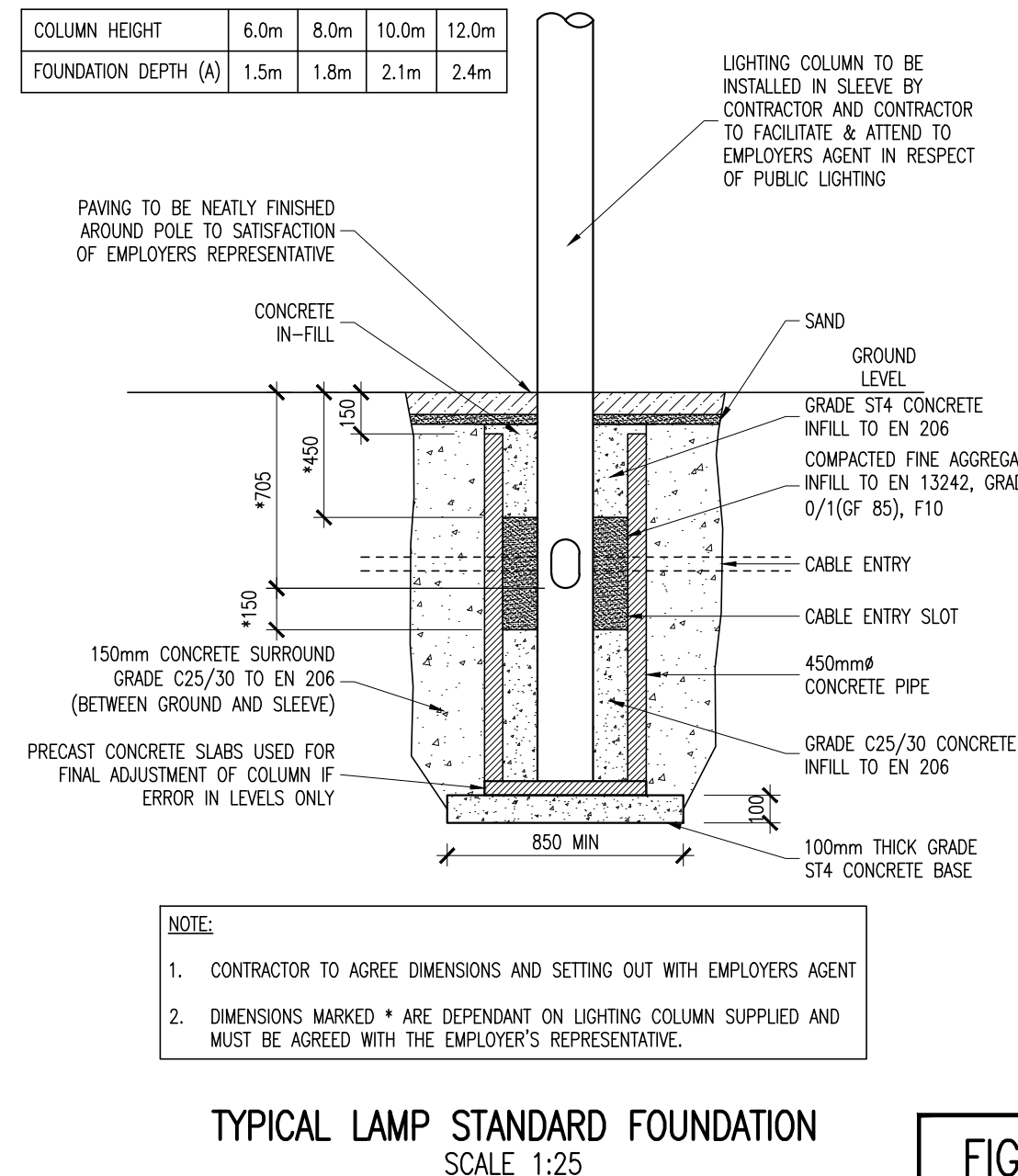


FIGURE 2C

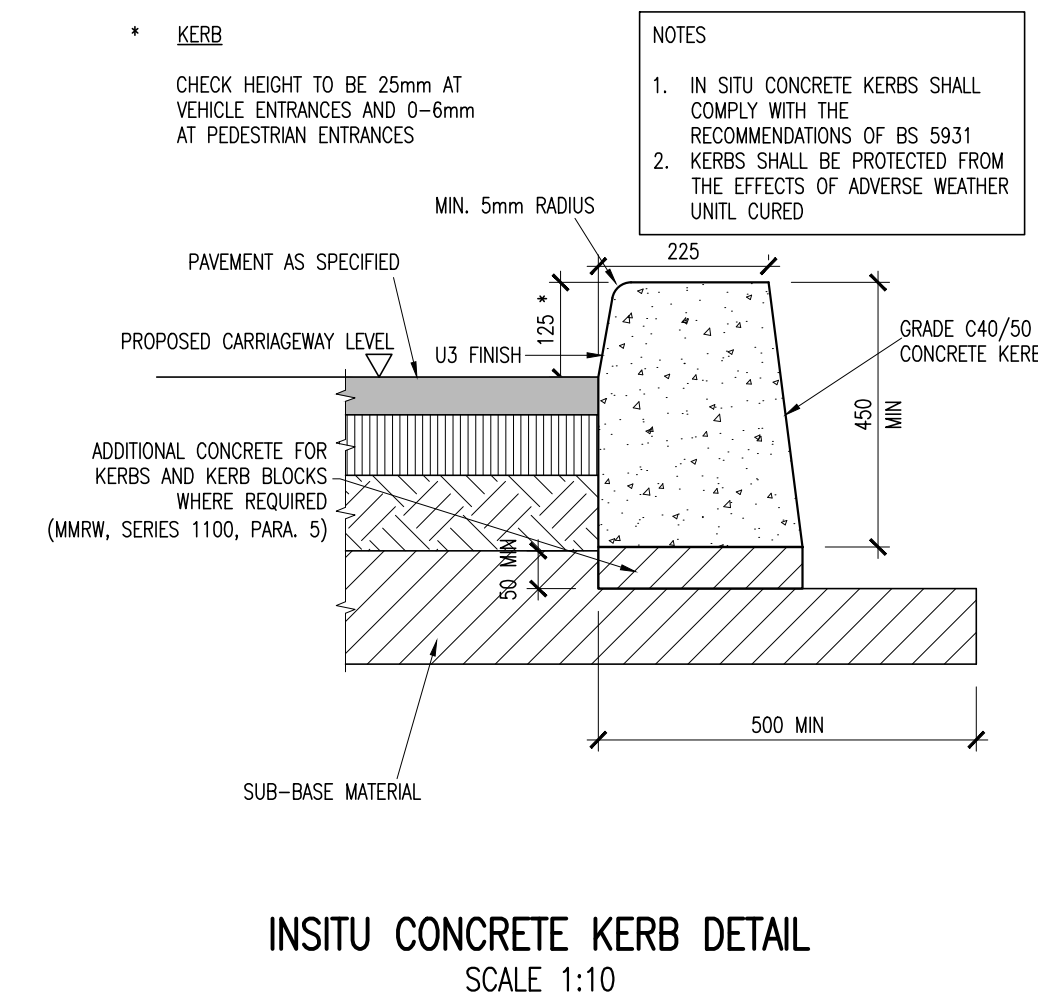


FIGURE 2D

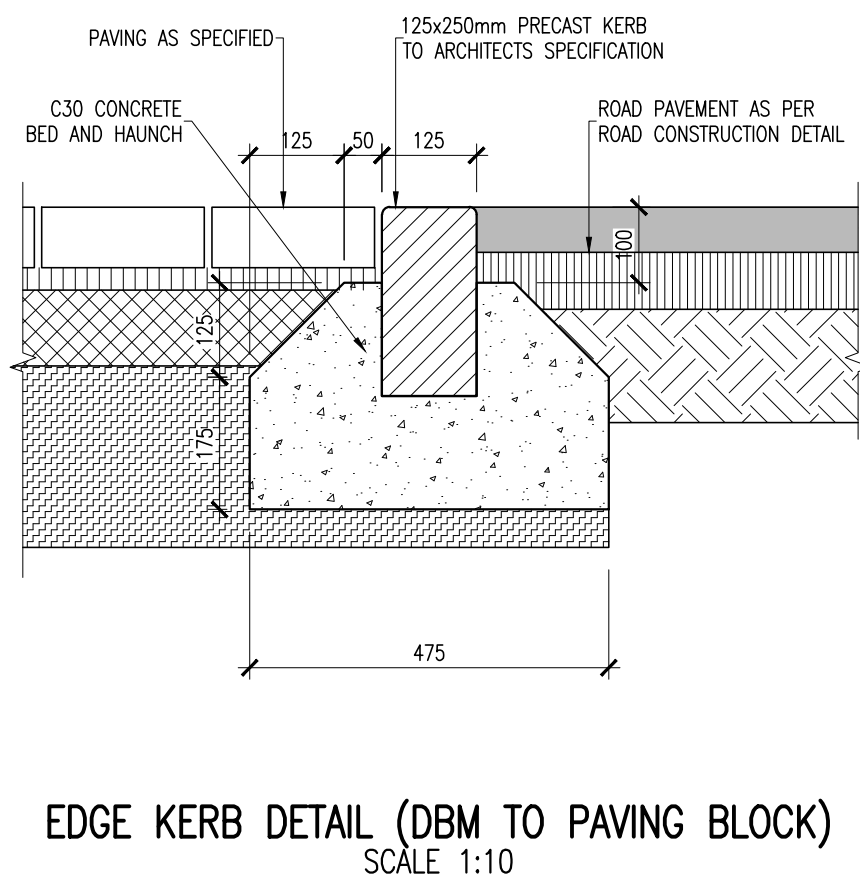


FIGURE 2E

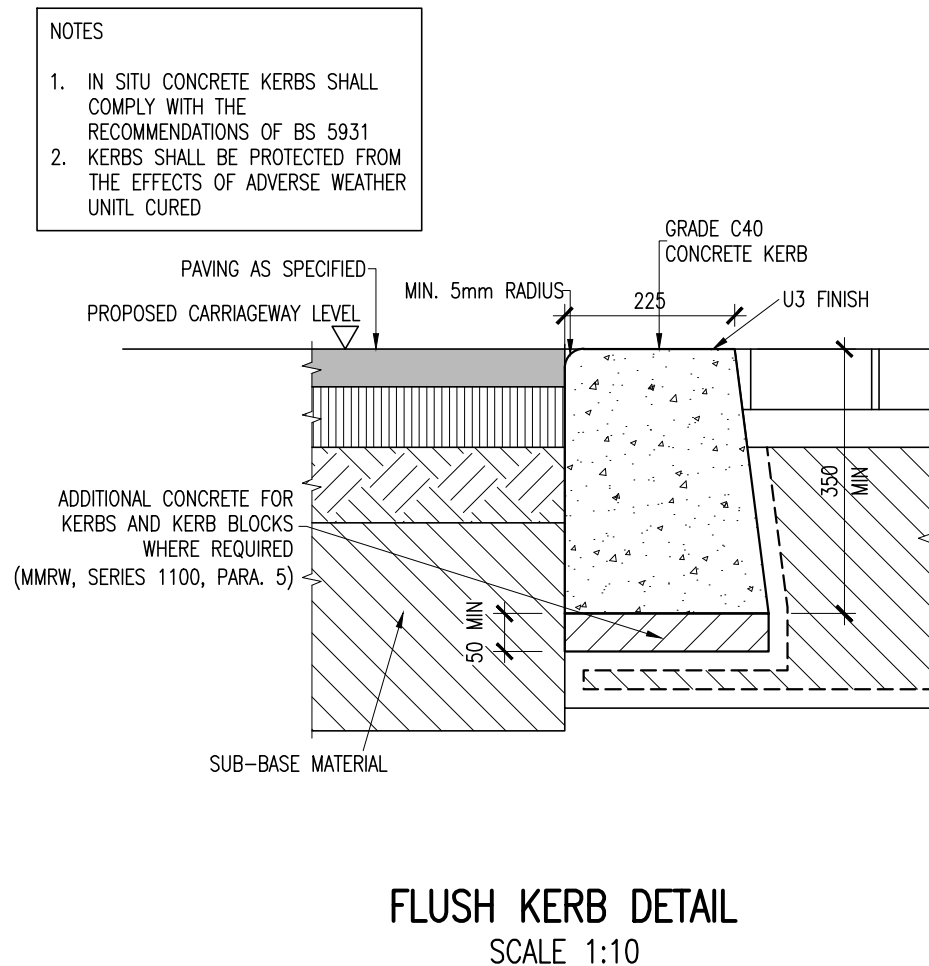


FIGURE 2F

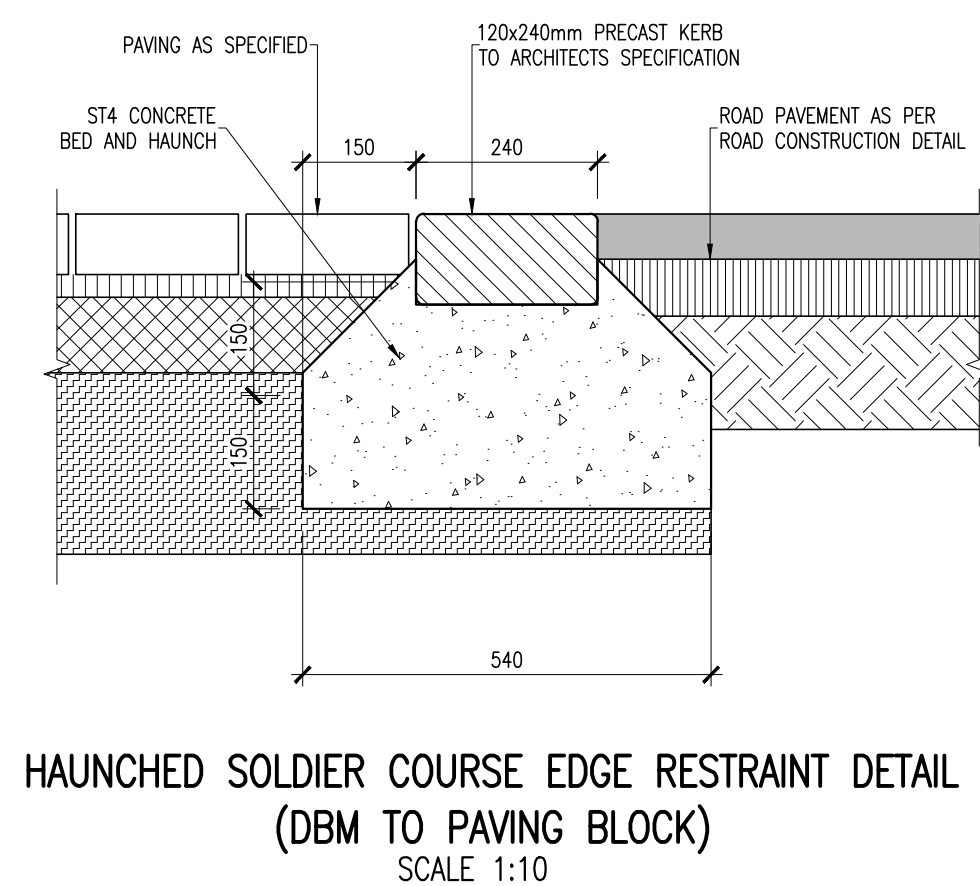


FIGURE 2G

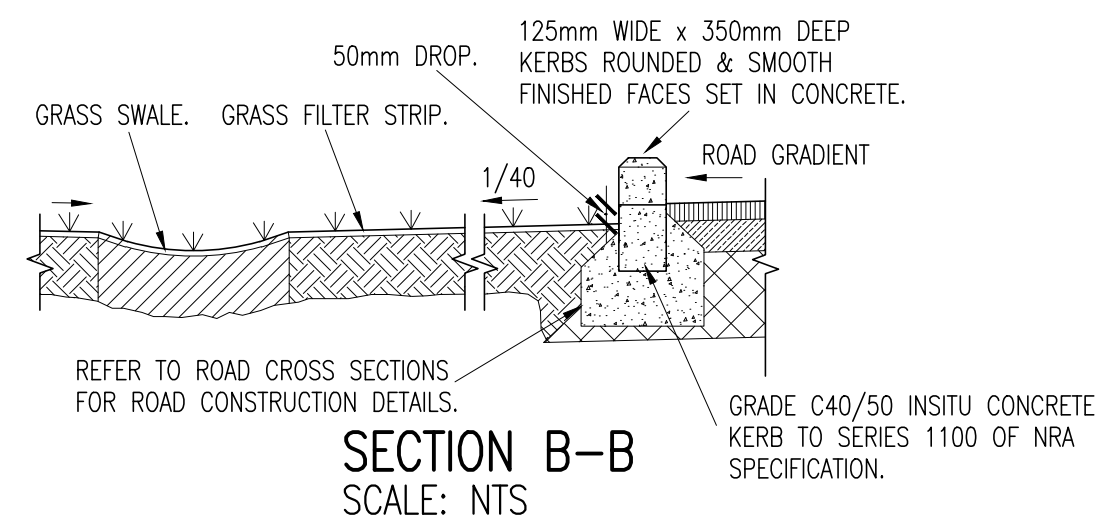
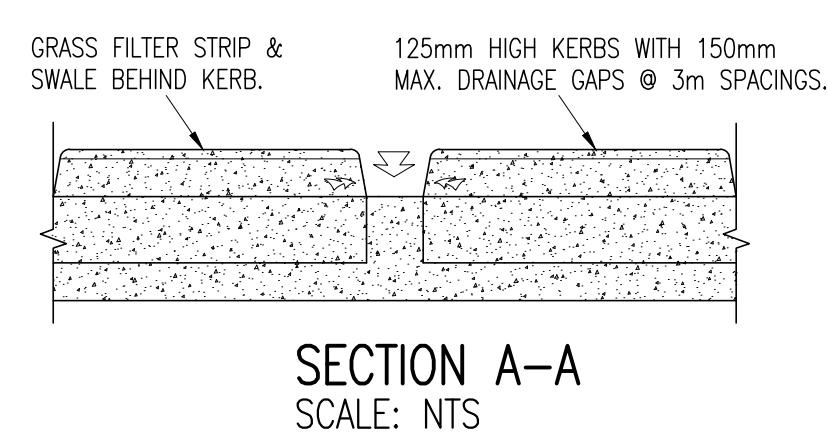
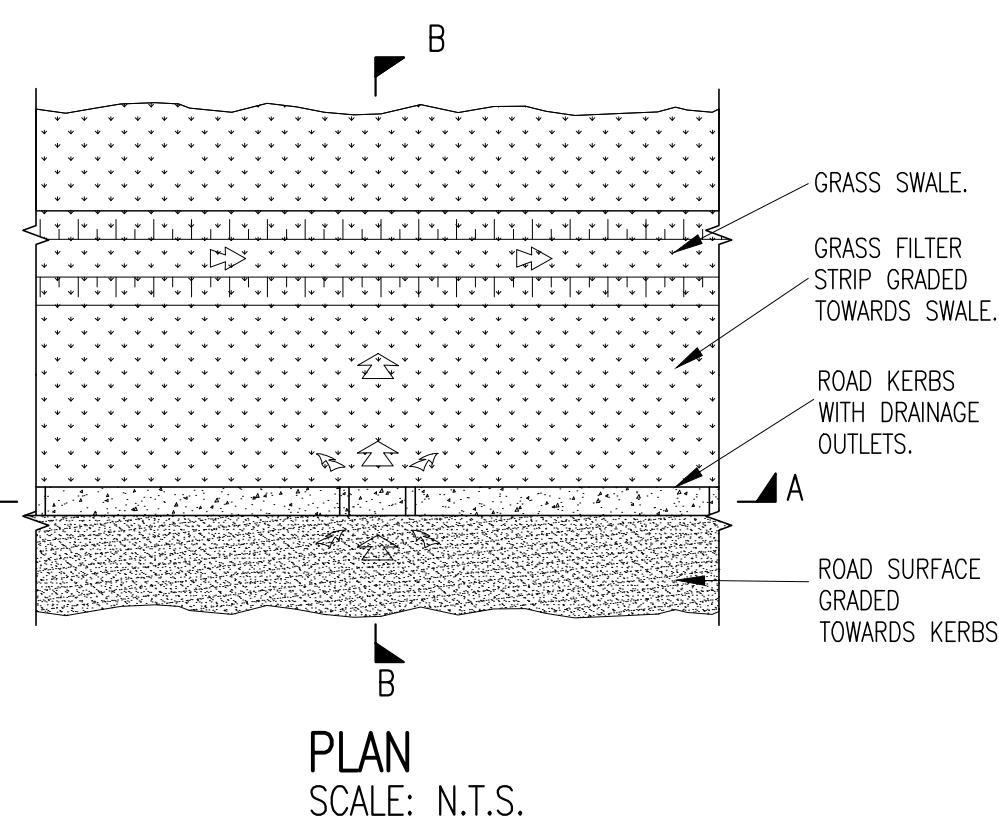


FIGURE 2H

TYPICAL ROADSIDE LATERAL KERB INLET (NON-CONTINUOUS KERB)

- © COPYRIGHT OF THIS DRAWING IS RESERVED BY DBFL CONSULTING ENGINEERS. NO PART SHALL BE REPRODUCED OR TRANSMITTED WITHOUT THEIR WRITTEN PERMISSION.
- ON ORIGINAL
- 0 5 10 15 20 25 30 35 40 50mm
- NOTES:
- ALL WORKS TO BE CONSTRUCTED IN ACCORDANCE WITH THE NRA SPECIFICATION FOR ROAD WORKS UNLESS OVERRIDDEN BY LOCAL OVERSEEING AUTHORITY'S STANDARDS
  - SUB-BASE MATERIAL SHALL COMPLY WITH CLAUSE 808 GRANULAR MATERIAL TYPE B OF NRA'S SPECIFICATION FOR ROAD WORKS (SRW) & SHALL SATISFY THE REQUIREMENTS OF TABLE 6/4 & 6/2.
  - SUB FORMATION & CAPPING MATERIAL SHALL COMPLY WITH CLAUSE 613 OF THE NRA'S 'SPECIFICATION FOR ROAD WORKS' & SHALL SATISFY THE REQUIREMENTS OF TABLE 6/1 & 6/2.
  - STONE BLINDING WITH 2-6.3mm AGGREGATE SHALL MEET THE FOLLOWING GRADINGS, IN ACCORDANCE WITH IS EN 13242
 

BS SIEVE SIZE (mm)	% BY MASS PASSING
14	100
10	98-100
6.3	80-99
2.0	0-20
1.0	0-5
  - ANY ROADS PROPOSED TO BE USED FOR CONSTRUCTION TRAFFIC ARE TO HAVE INCREASED DEPTH OF SUB-BASE FOR THE DURATION OF CONSTRUCTION IN ACCORDANCE WITH DBFL SPECIFICATIONS.
  - ALL WORKS SHALL BE COMPLETED IN ACCORDANCE WITH THE REQUIREMENTS OF THE LOCAL AUTHORITY.
  - ALL GEOGRIDS TO BE LAID IN ACCORDANCE WITH MANUFACTURERS SPECIFICATIONS.
  - ALL AGGREGATES PROPOSED FOR USE ON THIS SCHEME SHALL MEET FULLY THE REQUIREMENTS OF THE NRA SPECIFICATION FOR ROAD WORKS AND IN ADDITION THE REQUIREMENTS STATED IN STANDARD RECOMMENDATION S.R. 21:2014 GUIDANCE ON THE USE OF I.S. EN 13242:2002 +A1:2007-AGGREGATES FOR UNBOUND AND HYDRAULICALLY BOUND MATERIALS FOR USE IN CIVIL ENGINEERING WORK AND ROAD CONSTRUCTION.
  - ALL REFERENCES TO SERIES 900 OF NRA SPECIFICATION REFER TO SERIES 900 DATED DECEMBER 2014.

P02	10/12/21	STAGE 3 SHD PLANNING	GMC	BCM
P01	07-04-21	STAGE 2 SHD PLANNING	GMC	DMW
rev	date	description	by	chkd.
		A - Approved		
		B - Approved with comments		
		C - Do not use		
client approval				
suitability	S2 - INFORMATION	STAGE 2 SHD PLANNING		
issue purpose				
<b>DBFL Consulting Engineers</b> Civil, Structural & Transportation Engineering www.dbfl.ie				
DUBLIN OFFICE: Ormond House, Upper Ormond Quay, Dublin 7, D07 WY04 PHONE +353 1 460 4000 CORK OFFICE: Phoenix House, Monahan Road, Cork, T12 H1XV PHONE +353 (0) 21 220453 WATERFORD OFFICE: Suite 8b The Arkum, Marlboro Gate, Canals Street, Waterford, X91 WQ28 PHONE +353 51 908 500				
project ref.				
RESIDENTIAL DEVELOPMENT HOLLYSTOWN				
drawing title				
TYPICAL ROAD CONSTRUCTION DETAILS SHEET 2				
client				
GLENVEAGH HOMES LIMITED				
designed by	author	scale	sheet size	
DMW	GMC	AS SHOWN	A1	
drawing no.		revision		
170182-DBFL-RD-SP-DR-C-5202		P02		